

92°55'W

39°6'N

92°54'W

Howard County

Notes

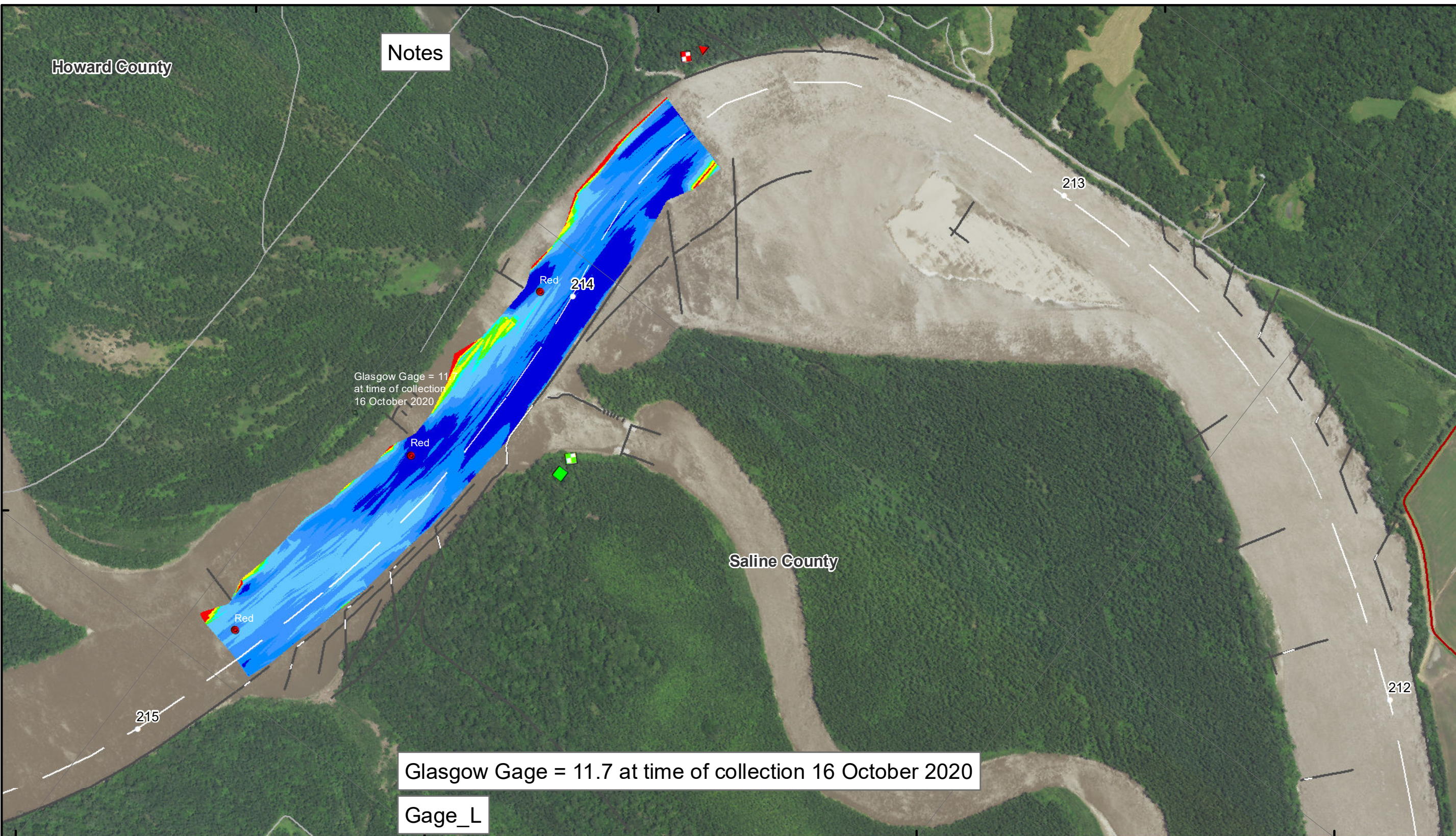


Disclaimer: The U.S. Army Corps of Engineers... This map is for informational purposes only and does not constitute a contract or warranty of any kind. The Corps of Engineers is not responsible for any errors or omissions in this map or for any consequences arising from its use.

KANSAS CITY DISTRICT MISSOURI RIVER AREA OFFICE	
Submitted By:	MRAO
Reviewed By:	MRAO
Checked By:	MRAO

Survey Information

MO_03_LMR
MO_03_LMR_20201016_CS_213_7_214_8_SORT
16 October 2020



Glasgow Gage = 11.7 at time of collection 16 October 2020

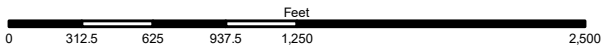
Glasgow Gage = 11.7 at time of collection 16 October 2020

Gage_L

LEGEND

- < 8
- 8 - 9
- 9 - 9.5
- 9.5 - 10
- 10 - 12
- 12 - 14
- 14 - 16
- > 16
- River Mile
- Sailing Line
- BSNP Structure
- Levee
- Green Passing
- Red Passing
- Green Crossing
- Red Crossing

- Green Buoy
- Red Buoy
- AIS Green CAN
- AIS Red NUN
- Green CAN
- Red NUN
- Junction

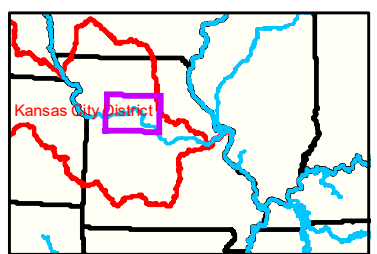
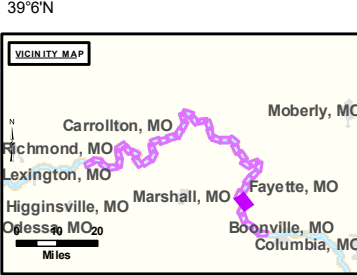


NOTES:
Horizontal Coordinate System:
World Geodetic System of 1984 (WGS84), projected to the Universal Transverse Mercator (UTM) Zone 15 North.
Distance units in U.S. Survey Feet

Vertical Datum:
Soundings are shown in feet and indicated depths are referenced to water surface at time of collection.

The information depicted on this map represents the results of a survey conducted on the date indicated and can only be considered to represent the general condition existing at that time.

The location of navigation aids are based on and provided by the U.S. Coast Guard.



Sheet Number
6 of 42